

THE INPUT

March 2021 • Volume 2, Issue 2



DIRECTOR'S MESSAGE

At the conclusion of the 2021 legislative session, the Utah Inland Port Authority is in a solid position to make an impact statewide. I'd like to highlight a couple of outcomes from the session affecting the Port Authority:

SB243 clarified public infrastructure districts, governance and established three independent infrastructure banks for three separate entities, including one for UIPA. The Port Authority is not a singular place but a statewide system, and this investment shows the legislature understands the importance of generational infrastructure projects.

This independent fund will be utilized as infrastructure needs arise, particularly for our regional approach statewide. I want to emphasize that we have NOT pre-determined projects to apply for this funding. The bank will largely operate to give loans that will be repaid from proceeds so it is self-sustaining. As an entity focused on infrastructure, this supports critical areas of our mission to relieve pinch points and make connections in the logistics system, deconflict, and advance new technology.

We are also excited to partner with the ASPIRE Center at Utah State University, Rocky Mountain Power, and UDOT to develop a freight logistics electrification project in the UIPA jurisdictional area over the next three years. The project will demonstrate charging systems with 5G communications, plug-in, static and dynamic wireless charging. It will begin to lay the ground work for electrified transportation to help improve air quality and enable sustainable growth throughout Utah.

I'd also like to recognize UIPA board members Representative Francis Gibson and Senator Gregg Buxton, who have been tremendous legislative champions. They were instrumental in leading our efforts in the House and Senate and secured the funding that will allow the Port Authority to move ahead and fulfill our mission.

UIPA is excited to utilize these resources as we move forward to make Utah a leader in revolutionizing global logistics for the next generation.

Thank you,



Jack C. Hedge
Executive Director
Utah Inland Port Authority

UPCOMING EVENTS

UIPA Board Meeting

Wednesday, March 17, 2021

4 p.m.

Zoom link and participation instructions will be available on the [UIPA website](#).

TRADE TALK

The logistics industry has a lot of trade-specific terms, so we're here to highlight a few and show their relevance to Utah. In this issue, we're learning about **rail terminology** and the difference between **intermodal** and **transloading**:

Rail Spur: Short, usually dead-end section of track used to access a facility or loading/unloading ramp. It also can be used to temporarily store equipment ([Union Pacific](#)).

Industrial Lead Track: An extended track connecting either end of a yard with the main track ([CSX](#)).

Rail Yard: A rail yard has a number of tracks running parallel to one another, where different freight trains carrying multiple containers run and are processed. Rail yards, which are also known as rail classification yards or shunting yards, separate or uncouple the freight cars and reassemble them with others having common destinations for single shipments ([Global Green Freight](#)).

Intermodal: Technically, intermodal shipping means moving freight by two or more modes of transportation. But when rail shippers talk about "intermodal," they usually mean shipments that travel between trucks and trains in containers ([Union Pacific](#)).

- **Key differentiator:** Products **stay in the same container** for the entire haul.

Transloading: Transloading is very similar to intermodal shipping in that products are transferred between trucks and trains—except that with transloading, products are moved between conveyances rather than staying in the same container the whole way ([Union Pacific](#)).

- **Key differentiator:** Products are moved from **one type of container to another**.
 - For example, goods may be moved from an international intermodal container into a long-haul, over-the-road truck trailer.

Connection to UIPA:

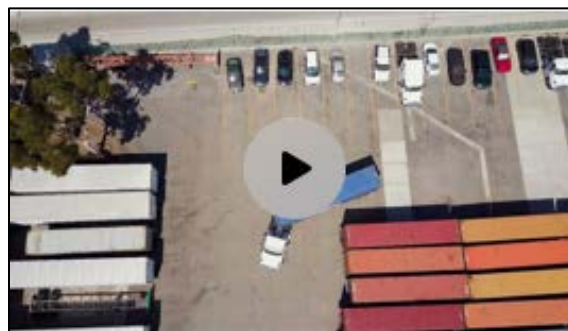
Transloading is important to Utah's local producers and manufacturers because it decreases the number of truck moves required to get products to and from warehouses and distribution centers, reducing traffic and air pollution. Further, by capturing empty international containers closer to the production site—and loading them full of goods onto rail—we will reduce or eliminate truck miles traveled, which reduces transportation costs significantly.

Intermodal in Action:

Take a virtual tour of Union Pacific's intermodal ramp operations in this [six-minute video](#) and see how the containers are moved between transportation modes:

**Transloading in Action:**

Watch how products are unloaded, prepared as inventory and then loaded again in this [90-second video](#):



QUOTABLE

“I am a small business owner; I live on the west side. I own a few trucks and we want to collaborate with the inland port. I support it all the way.”

- Kesa Vakapuna, Axis Connect Trucking School Co-Owner

“The growth is going to happen and how we move goods will not solve itself. The movement of goods through our state will only get more complex with growth. I commend your forward-looking vision and efforts to mitigate the state's logistical issues.”

- Darin Bushman, Piute County Commissioner

NEWS DESK

UIPA RELEASES

- [Utah Inland Port Authority Receives Clean Bill of Financial Health](#)
- [Utah Inland Port Authority Adds New Team Members](#)

IN THE NEWS

- [What Passed And What Failed – A Recap Of The 2021 Legislative Session \(KUER\)](#)
- [Utah Inland Port 'infrastructure bank' bill sails through Senate \(Deseret News\)](#)
- [Utah Legislature's Latest Inland Port Bill Creates 'Bank' To Fund Infrastructure Projects \(KUER\)](#)
- [Inland Port gives \\$171,000 in tax differential funds to SLC housing \(The Enterprise\)](#)
- [Will Utah become 'epicenter' of research to electrify transportation? \(Deseret News\)](#)

INDUSTRY NEWS

- **News Article:** [White House issues executive order focused on securing critical U.S. supply chains \(Logistics Management\)](#)
 - **Video:** [Locomotive Engineer and TSC Coordinator Wade Wilde of Ogden, Utah, Receives Union Pacific's 2020 J.C. Kenefick Safety Award Winner](#)
 - **News Article:** [Zion National Park gets \\$33 million federal grant for electric shuttles \(Salt Lake Tribune\)](#)
 - **Feature Article:** [Rail: An Environmentally Responsible Way to Ship \(Track Record by UP\)](#)
 - **News Article:** [Crocs: Redundancy in ocean freight contracts takes priority over cost \(Supply Chain Dive\)](#)
 - **Commentary:** [Top Packaging Innovations Enable E-Commerce Growth and Sustainability \(Inbound Logistics\)](#)
 - **News Article:** [Navistar, GM and J.B. Hunt collaborate on fuel cell trucks \(Freight Waves\)](#)
-

[VIEW PAST EDITIONS OF THE INPUT](#)
[SUBSCRIBE AND CHECK "INCLUDE IN EMAIL LISTS"](#)

Utah Inland Port Authority
inlandportauthority.utah.gov
801-538-8650

