



Inland Port Transportation Projects



Helen Peters

Transportation Program Manager
Salt Lake County



7200 West Study | SR-201 to 700 North

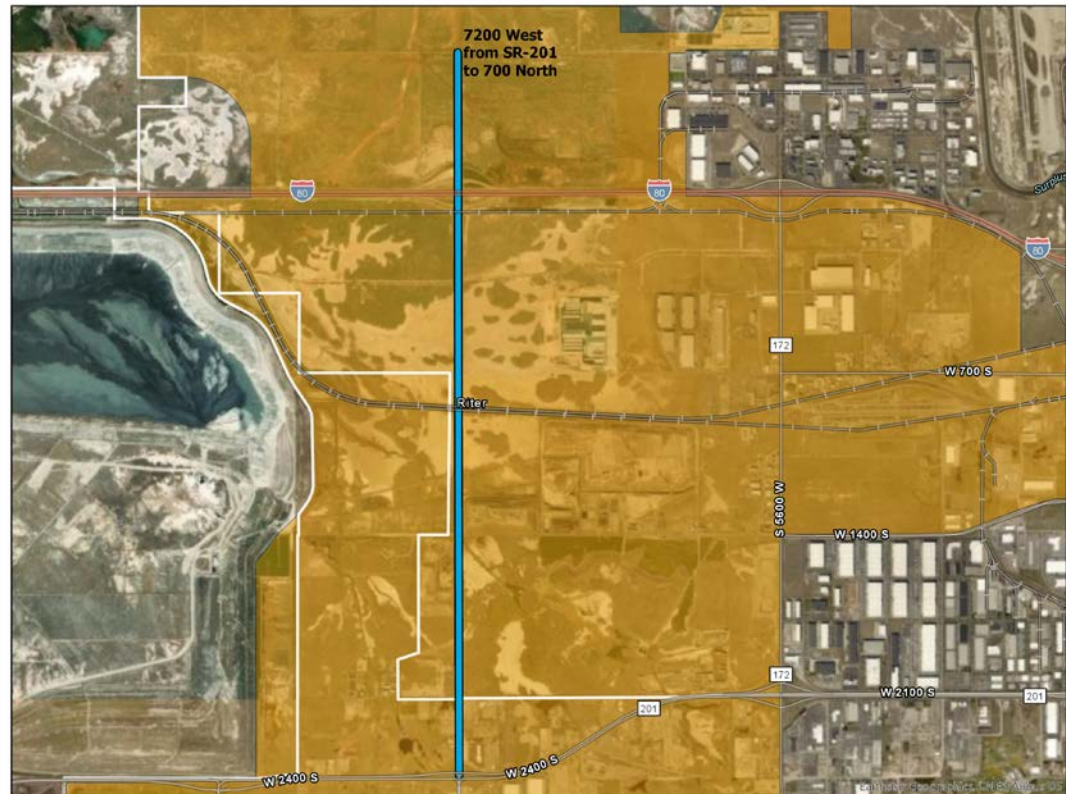
Needs Assessment, Preliminary Engineering & Cost Estimate

Project Purpose:

- Inform future environmental study
- Coordinate with US Army Corps of Engineers on, & assist with preparation of future Section 404 of Clean Water Act Permit
- Provide preliminary engineering & analysis to develop conceptual level of design and preliminary construction cost estimates

Three-lane facility with right of way preservation for an eventual five-lane roadway at full build out

Study to be complete in Sept. 2018



Project Consultant: H.W. Lochner



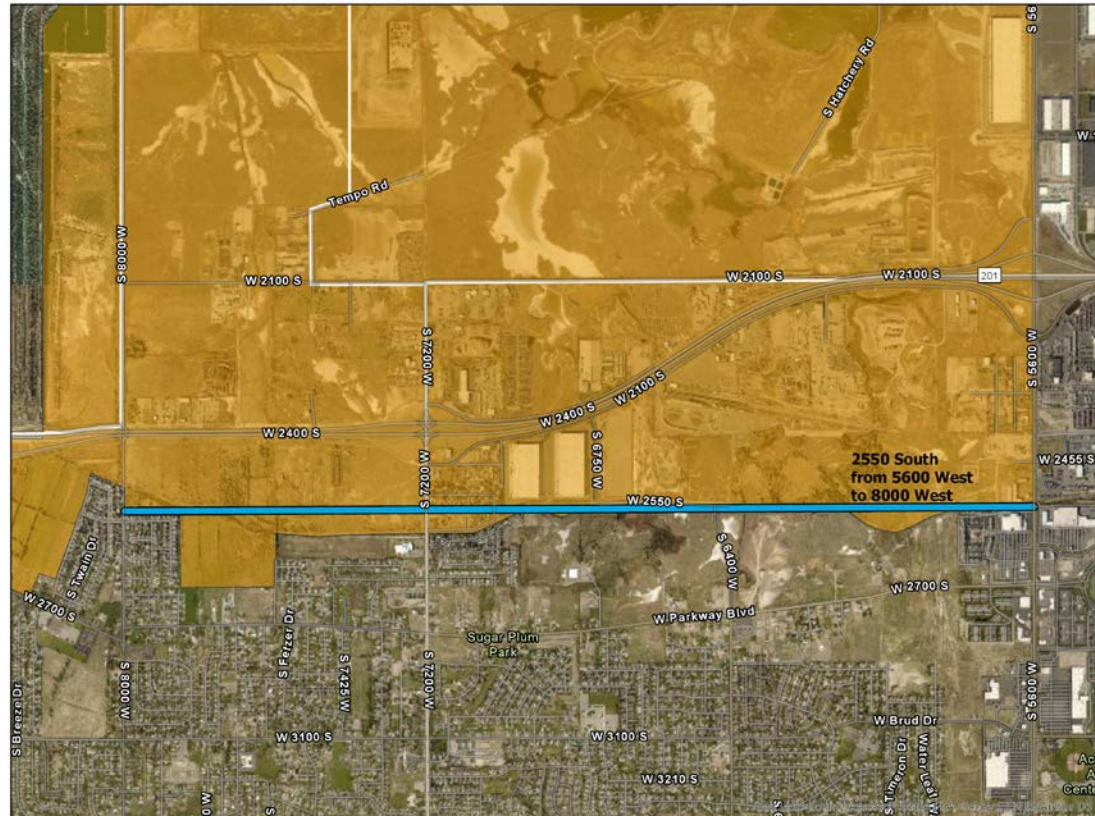
2550 South from 5600 West (SR-172) to 8000 West

SB 234 (2018) provided \$4M for projects benefitting authority jurisdictional land with \$4M Salt Lake County Match

West Valley City: 2550 South from 5600 (SR-172) to 7200 West, Phase 1 (6750 W to 7200 W) to be constructed in spring 2019

Magna Metro Township: 2550 South from 7200 West to 8000 West

Currently UDOT is advancing \$1M to each jurisdiction to complete design and construction





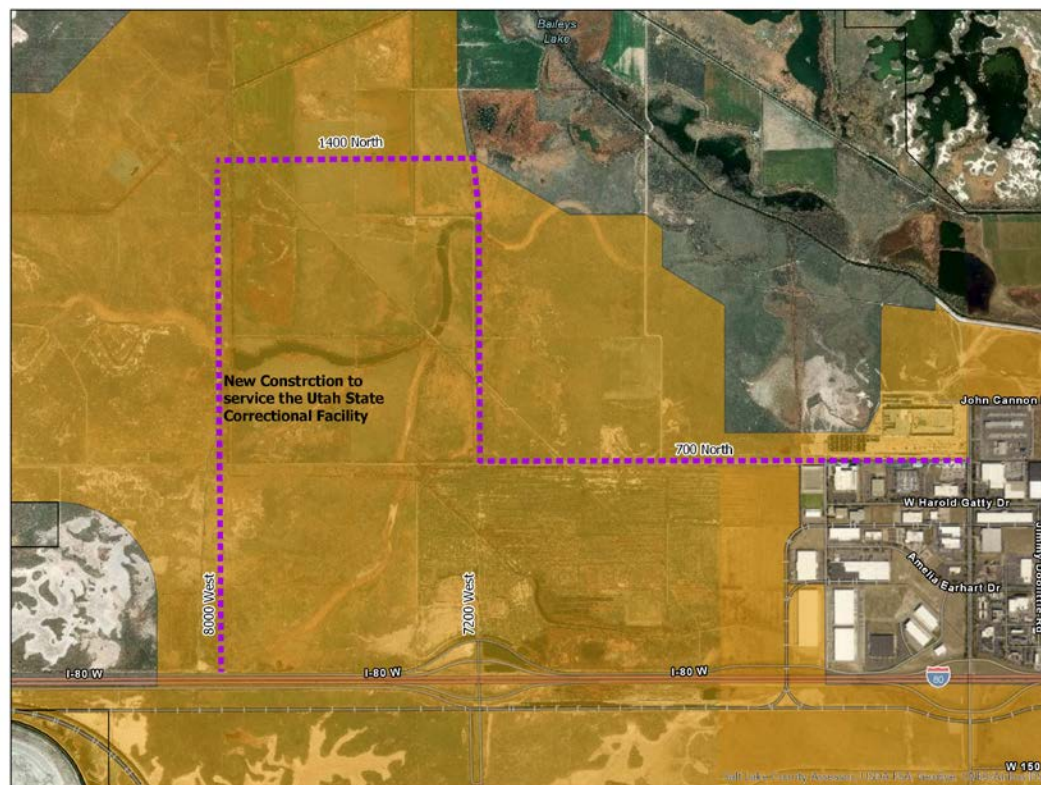


Regional Transportation Plan (RTP) 2015 – 2040

Wasatch Front Regional Council (WFRC)

Salt Lake County requested the following projects be added to the RTP:

- New Construction on 8000 West from I-80 north frontage road to 1400 North
- New Construction on:
 - 700 North from 5600 West to 7200 West
 - 7200 West from 700 North to 1400 North
 - 1400 North from 7200 West to 8000 West
- All Projects in Phase 1 (2015 – 2024)
- Three-lane facilities that will provide access to the new Utah State Correctional Facility





Questions?



Helen Peters

Salt Lake County
Transportation Program Manager

HPeters@slco.org

385.468.4860



Oquirrh View | Regional Planning



Jake Young
Planning Program Manager
Salt Lake County

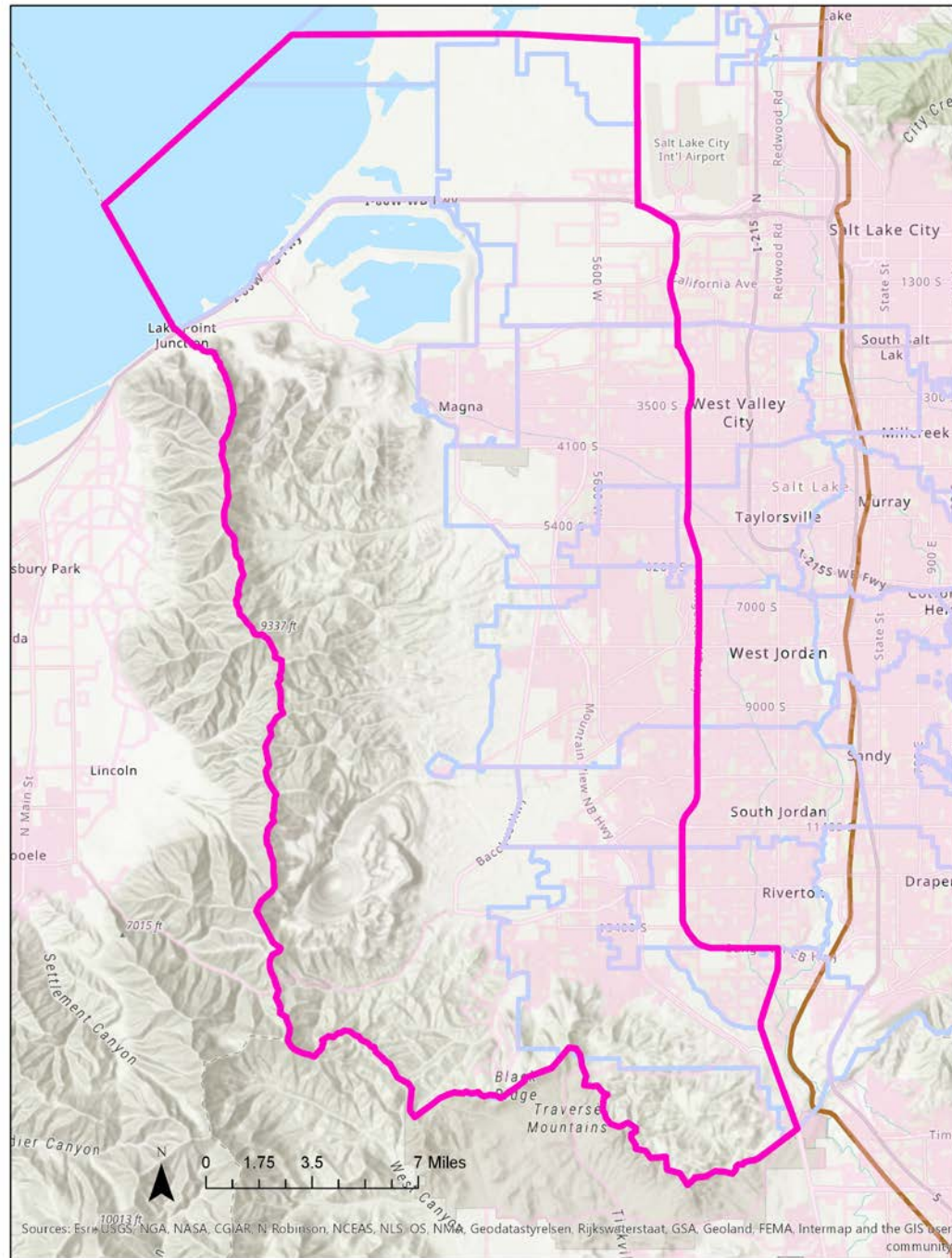


Oquirrh View

Existing Conditions Study



Study Area





Oquirrh View Existing Conditions Study / Topics



Demographics



Land Use



Transportation



Utilities



Housing



Economy



Parks & Trails



Environment

Oquirrh View

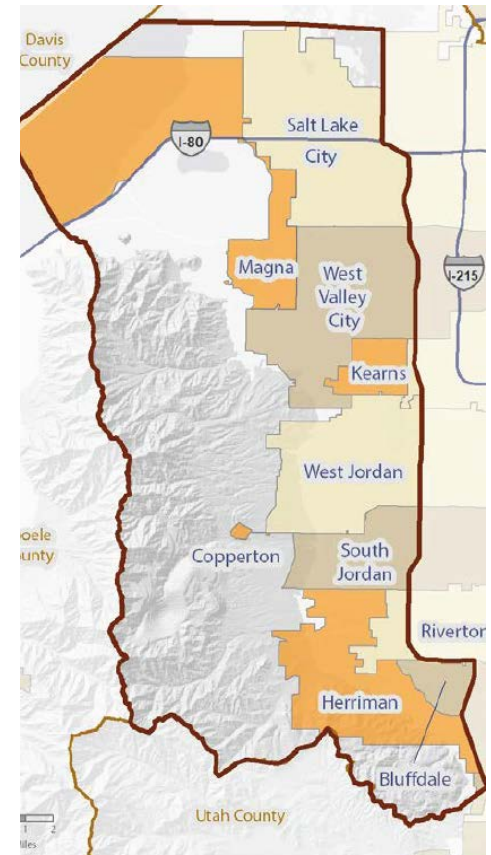
Demographics/Population

Table X: Population of Oquirrh View Study Area Cities, Salt Lake County, and State of Utah

Draft	April 1, 2000	April 1, 2010	July 1, 2017	Change 2000 to 2017		Change 2010 to 2017	
				Absolute	Percent	Absolute	Percent
Utah	2,233,169	2,763,885	3,101,833	868,664	39%	337,948	12.2%
Salt Lake County	898,387	1,029,655	1,135,649	237,262	26%	105,994	10.3%
Oquirrh View Area	533,514	659,900	741,873	207,533	39%	81,973	12.4%
Bluffdale	4,700	7,598	13,484	8,784	187%	5,886	77.5%
Copperton*	n/a	826	826	n/a	n/a	n/a	n/a
Herriman	1,523	21,785	39,224	37,701	2475%	17,439	80.1%
Kearns*	33,659	35,731	35,834	2,175	6%	103	0.3%
Magna*	22,770	26,505	27,773	5,003	22%	1,268	4.8%
Riverton	25,011	38,753	43,344	18,333	73%	4,591	11.8%
South Jordan	29,437	50,418	70,954	41,517	141%	20,536	40.7%
West Jordan	68,336	103,712	111,783	43,447	64%	8,071	7.8%
West Valley City	108,896	129,480	137,712	28,816	26%	8,232	6.4%

Source: U.S. Census Bureau, Population Division; Kem C. Gardner Subcounty Estimates Program.

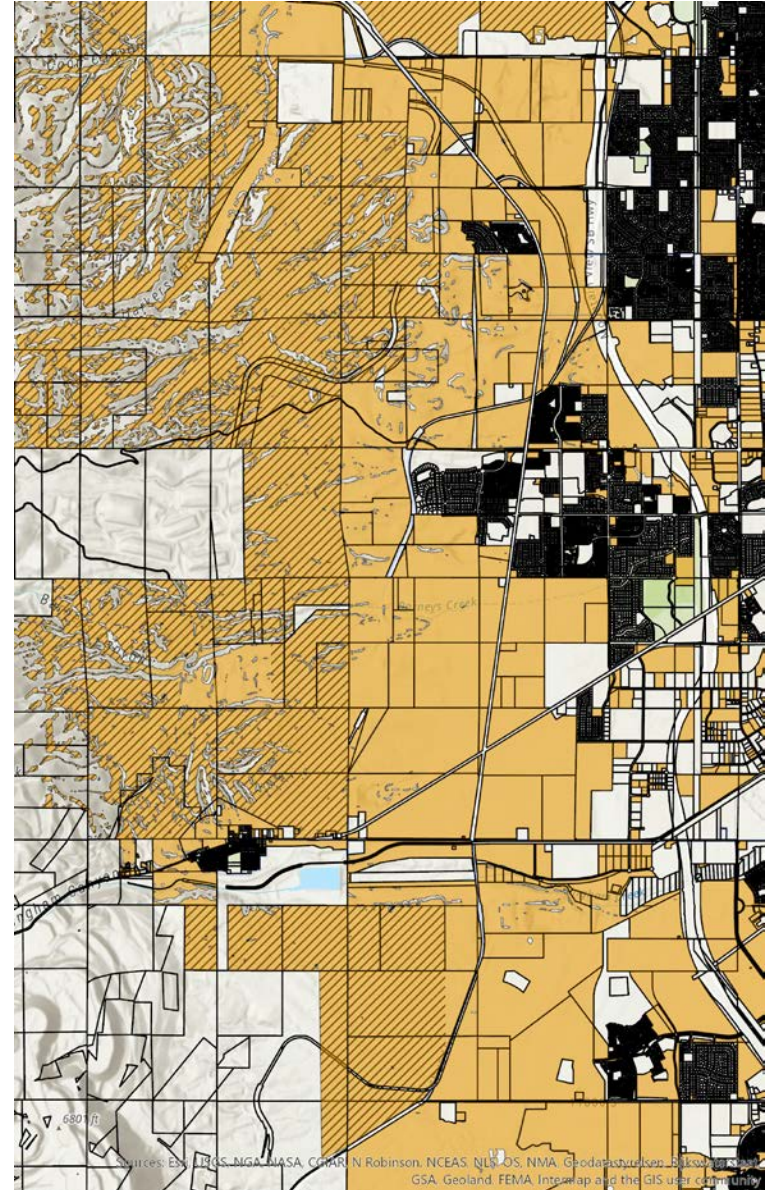
* The July 1, 2017 estimates for the townships of Copperton, Kearns, and Magna were produced by the Kem C. Gardner Subcounty Estimates Program. All other July 1, 2017 estimates, including state and county totals, come from the U.S. Census Bureau's Population Division Estimates. Note: population estimates are for entire cities not just study



■ Oquirrh View Study Area
■ County Boundary

Developable Area (draft)

- Short to mid-term: 33,363 acres | 52.13 sq miles
- Mid to long-term: 15,174 acres | 23.71 sq miles
- Total Developable Land: 48,537 acres | 75.84 sq miles





Questions?



Jake Young, AICP, PLA

Salt Lake County
Planning Program Manager

JaYoung@slco.org

385.468.4859